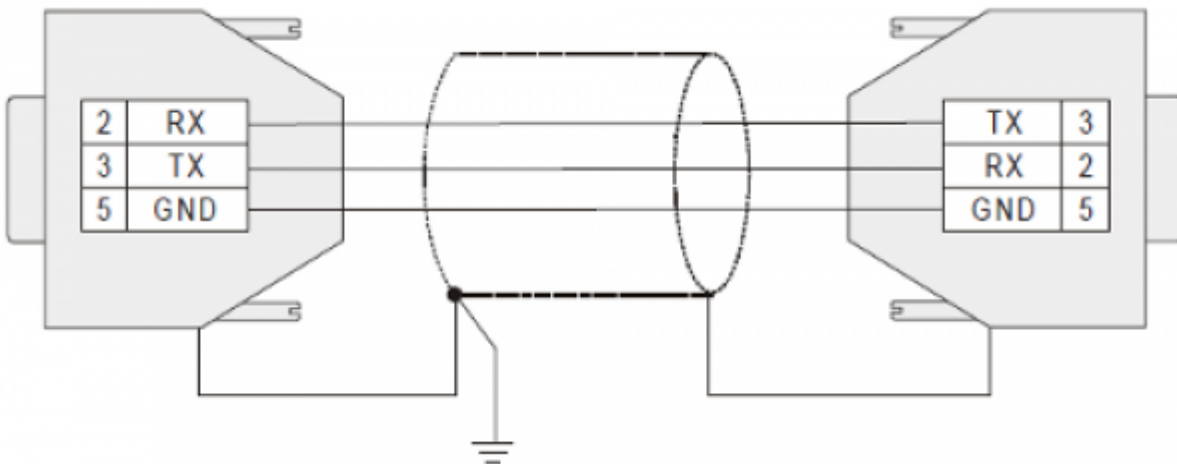


Sommario

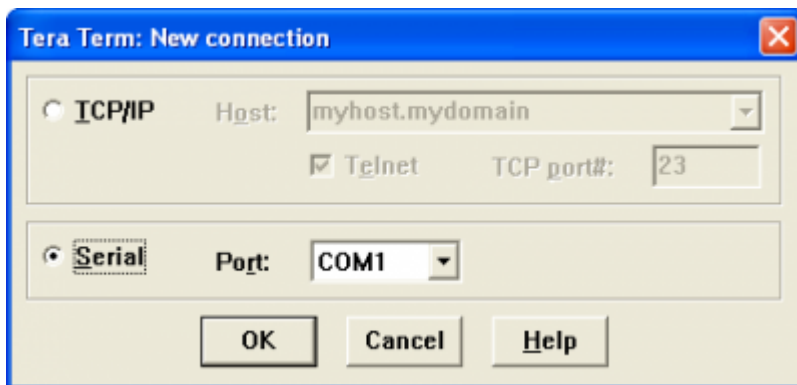
AN012 - How to reset battery alarm on C1-455-B.	3
---	----------

AN012 - How to reset battery alarm on C1-455-B.

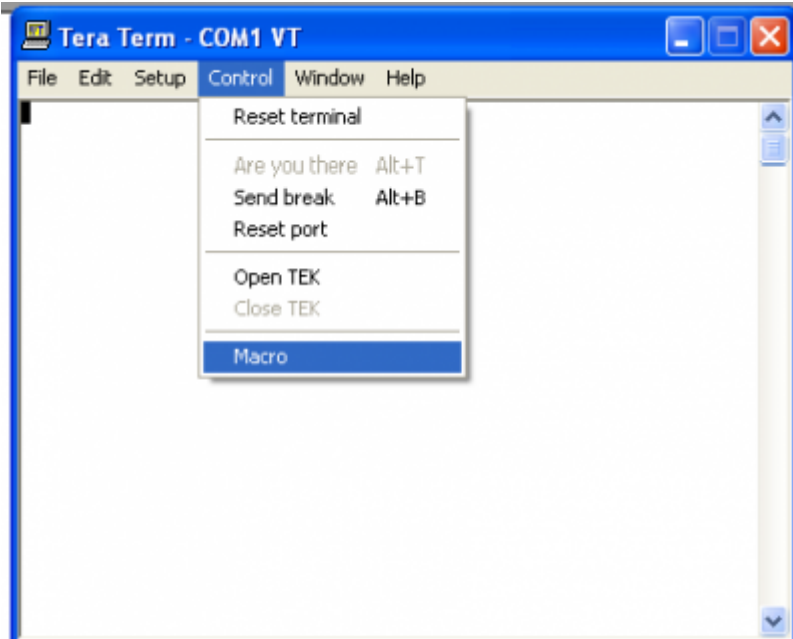
- Get the programming cable built as shown:



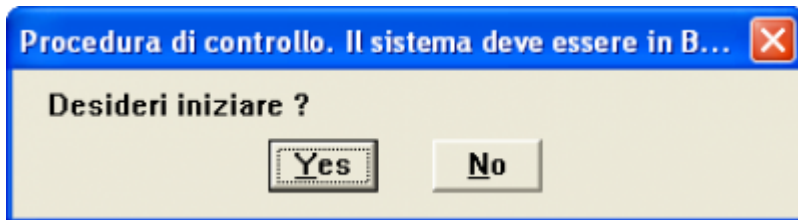
- Replace the battery with the **instrument switched on**.
- Install the program "[Teraterm Pro](#)" after the extraction and follow the installation instructions.
- Open the "Teraterm Pro".
- When opening the following screen will appear. Set the desired COM port.



- Click on the "Setup" menu and then select "Serial port". Setting the speed to **19200**.
- Put in boot the C1-455 instrument, by pressing the "RESET" system button and now the "BOOT" button.
- If the procedure is correct led "BOOT" lights.
- Open the "Control" menu and select "Macro". From the explorer window, select the file "[ver.ttl](#)" after extraction.



- At this point the following screen will appear. Select “Yes”.



- Set the date and follow the directions.
- At this point the “BATT” led turns off.

Documento generato automaticamente da **Qem Wiki** - <https://wiki.qem.it/>

Il contenuto wiki è costantemente aggiornato dal team di sviluppo, è quindi possibile che la versione online contenga informazioni più recenti di questo documento.