

Sommario

AN019 - Procedure for replacing the battery on J1P72F	3
Release	3
Warnings	3
Compatible battery	3
Procedure for battery replacement	4
Date and time adjustment	9

AN019 - Procedure for replacing the battery on J1P72F

The purpose of the following document is to describe the procedure for replacing the battery that keeps the calendar active when the instrument is in off.

Release

Document release	Description	Note	Date
01	New manual		24/07/2013

Warnings

The following operations must be carried out by skilled and formally authorised personnel.
Before touching any electrical parts, the operator will have to discharge its static electricity to the ground.

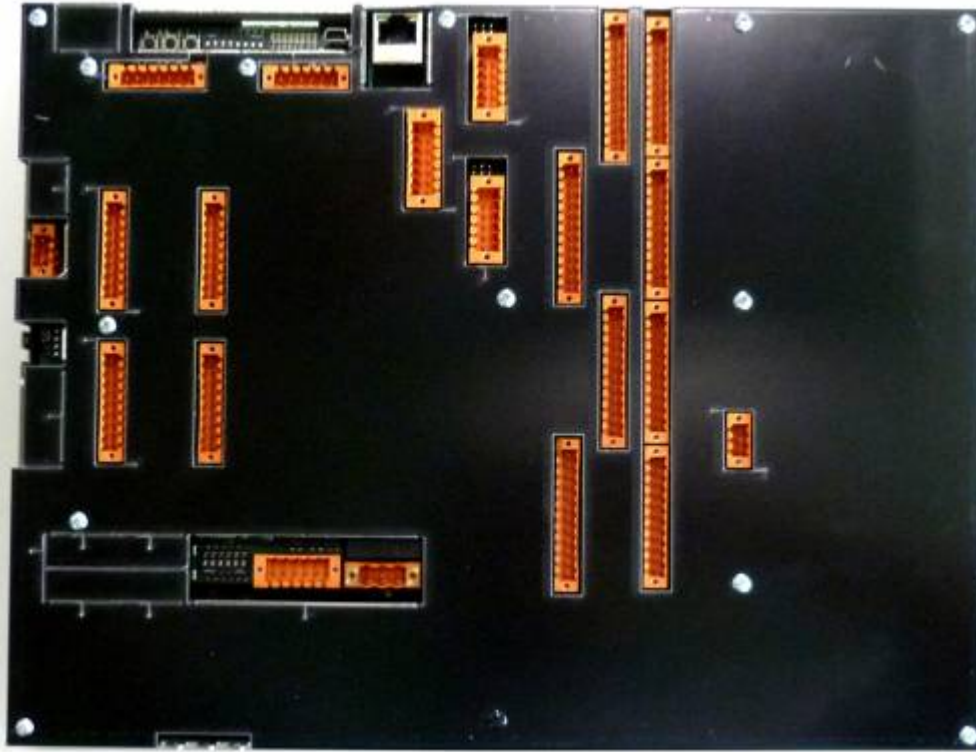
Compatible battery



LITHIUM BATTERY CR2032 BOT 3V

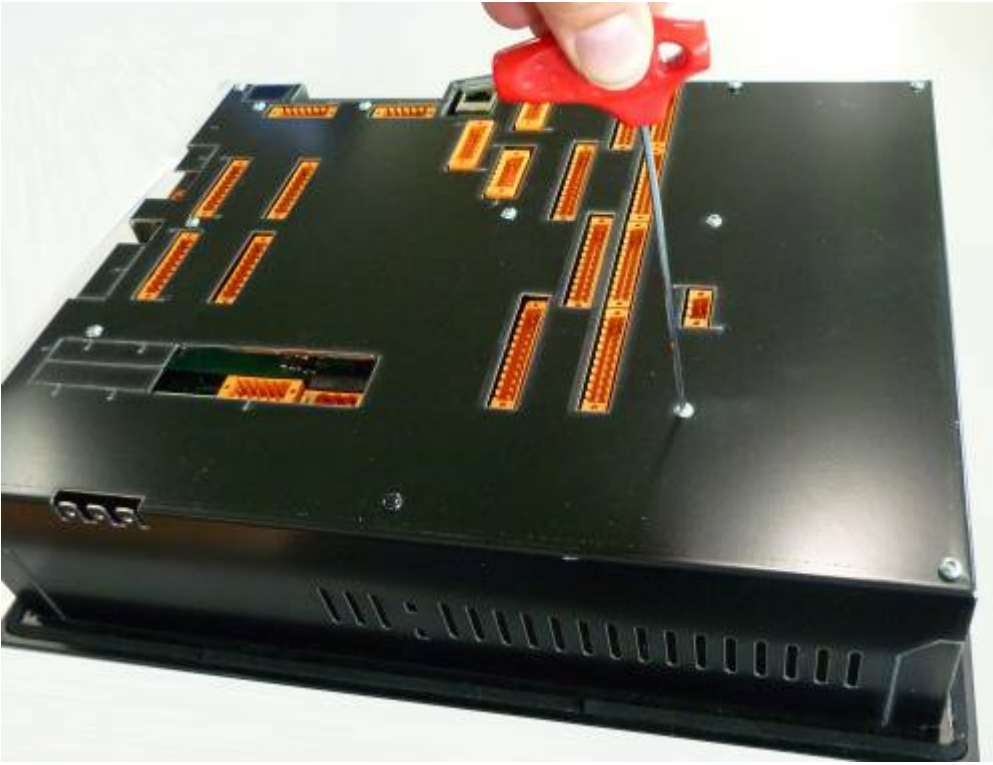
Procedure for battery replacement

- Remove the instrument from the electrical panel.
- Place the instrument with the front side facing the bench so as to work on the back cover.
- The instrument should be placed on a plane that does not smear or damage the front of the instrument touch



- Use a 2mm allen wrench to unscrew the thirteen screws on the back of the instrument.

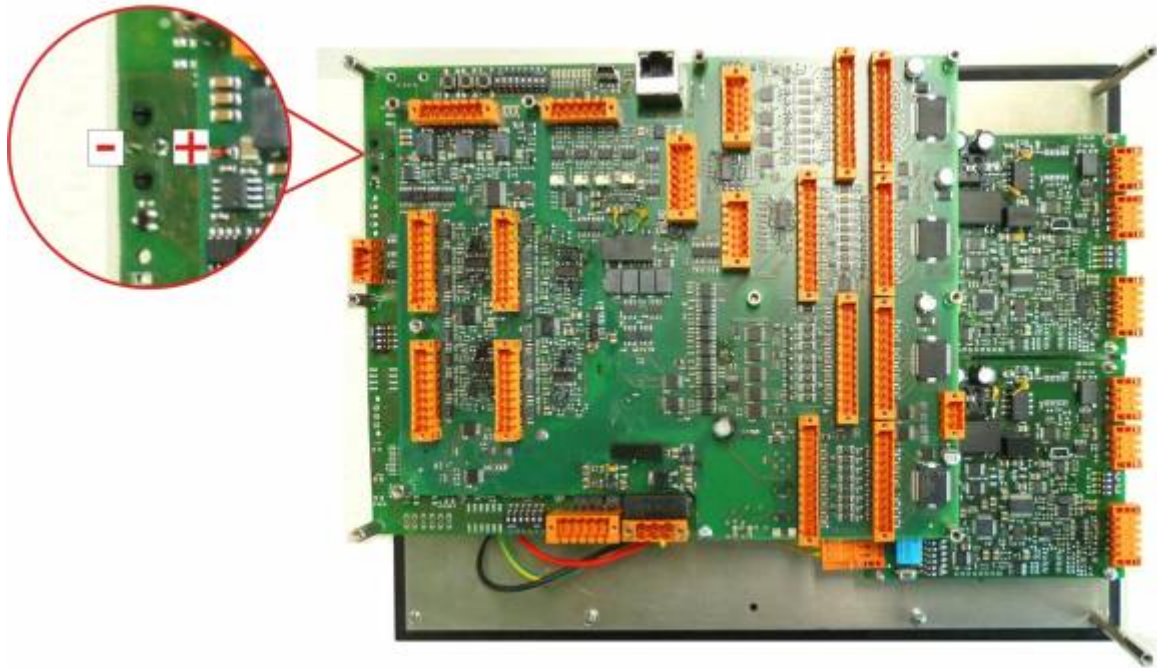




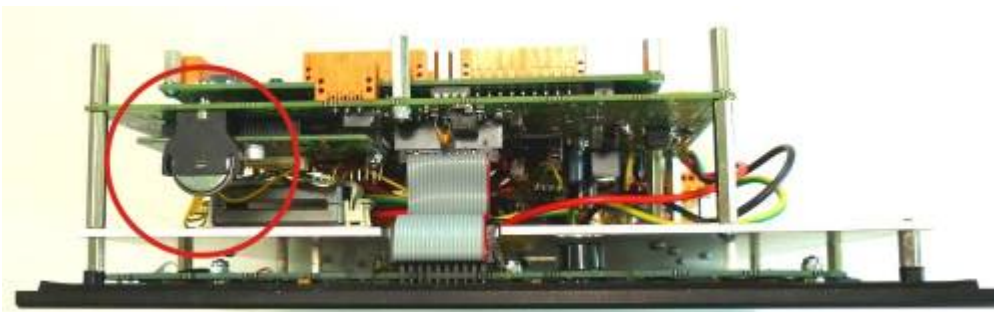
- Lift the cover.



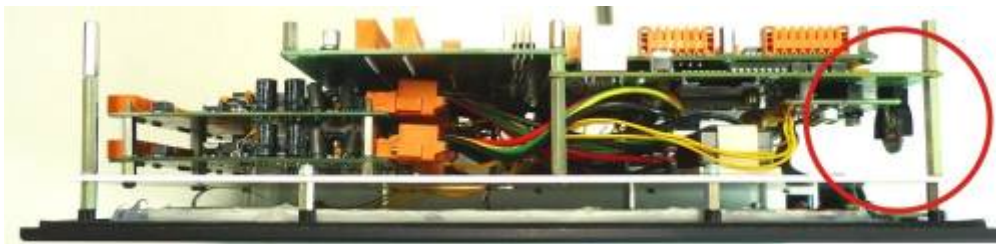
- Locate the Battery, paying attention to Polarities.



Rear View

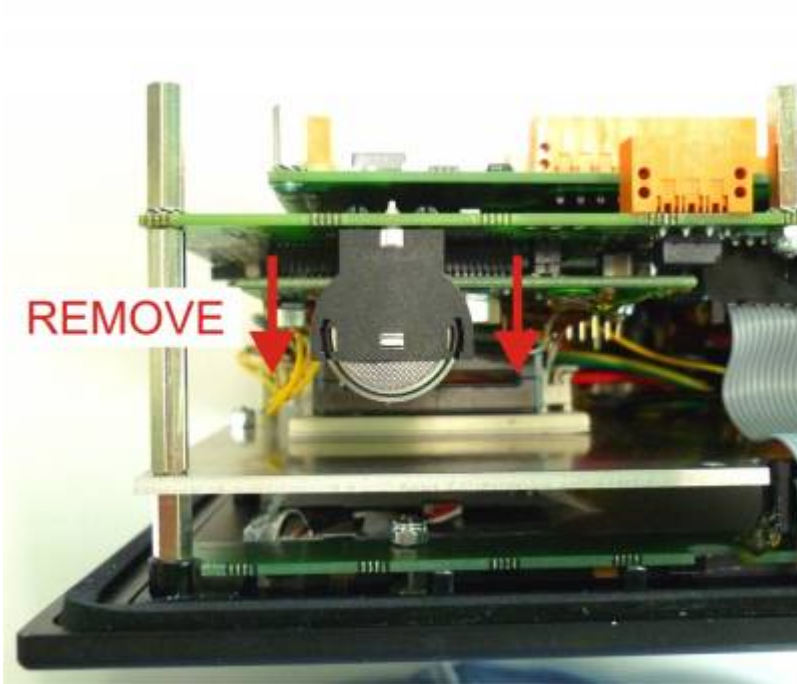


Side view

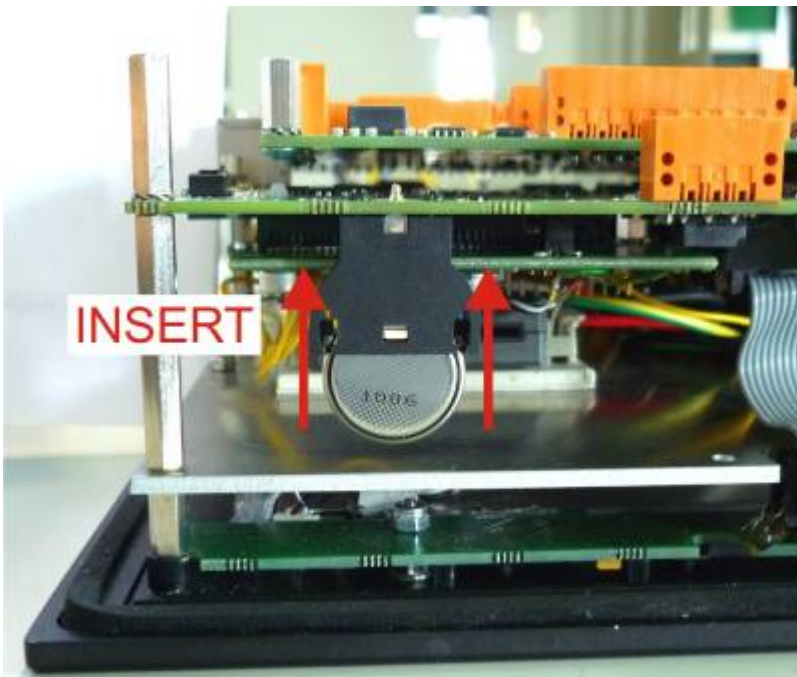


Top view

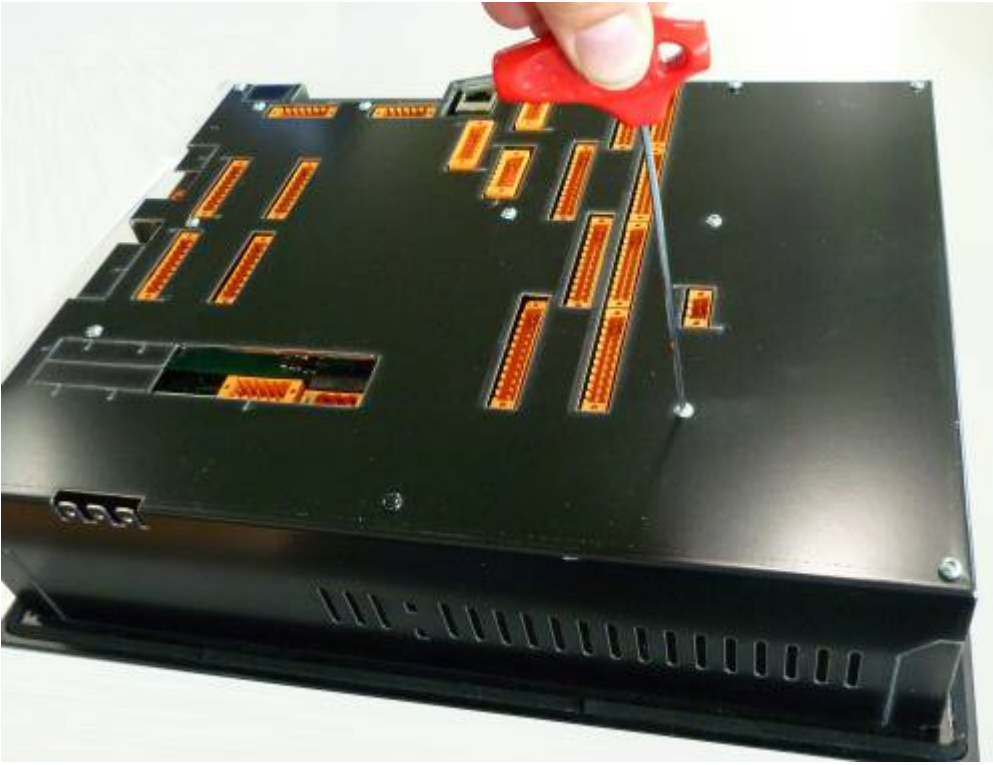
- Remove the battery in the direction indicated.



- Insert the new battery in accordance with the correct polarity.



- Close the instrument, making sure that the cover is properly seated in the appropriate "guides" of the rear frame.



- Screw all 13 screws.

Date and time adjustment

By removing the battery with instrument off time and date settings are lost and requires adjustment.
To adjust the date and time:

- From the main application page, Called "Process data", press the "F1" key.



- You will go to the “Activation Service” page.



- Insert date and time within the specified space

N.B. When the operation is completed, it is advisable to turn off and turn on the instrument to ensure that the operation was successful.

Documento generato automaticamente da **Qem Wiki** - <https://wiki.qem.it/>

Il contenuto wiki è costantemente aggiornato dal team di sviluppo, è quindi possibile che la versione online contenga informazioni più recenti di questo documento.